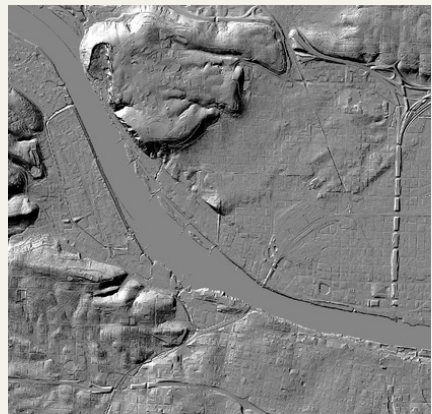
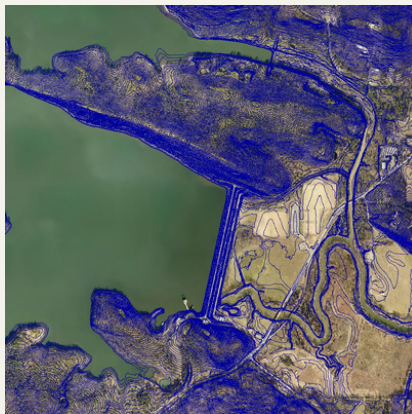
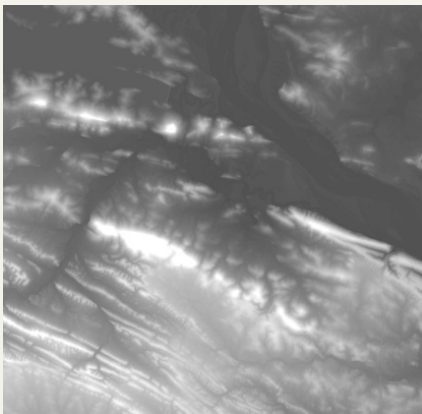


NEW PROJECTS

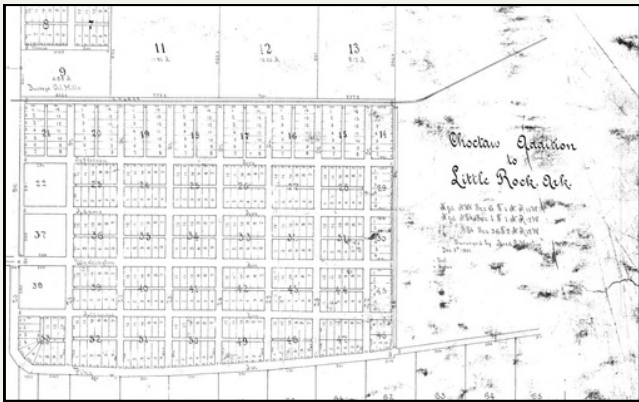
LIDAR 2023

PAgis received Lidar data in 2023 and has created a variety of products using this LAS dataset. The following products are available: contour lines, hill shade, slope, and DEM. If you are with a PAgis member agency and have a need for the 2023 Lidar products please bring a hard drive over and we will be happy to load those products for you. You can also receive the point cloud data (LAS dataset).



PAGIS_SUBS UPDATE

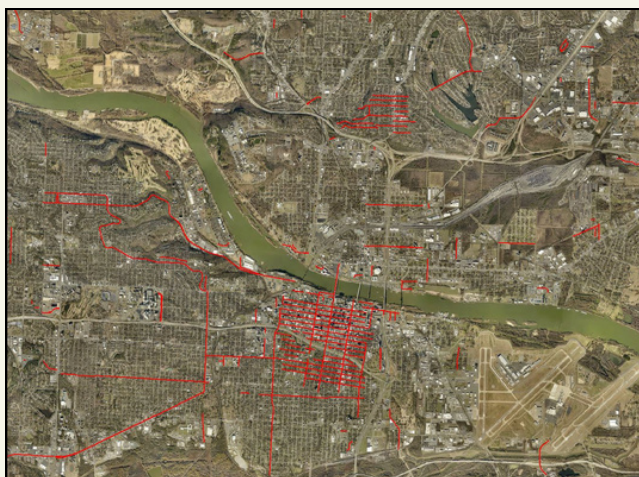
In October, 2023 PAgis received scanned images of Pulaski County Circuit Clerk Plat Books. These books contain over 4,000 individual images. The PAgis team is working to add each plat book image to the PAGIS_SUBS layer. This layer serves as a look back in history at how cities within Pulaski County have expanded over 120+ years. The PAGIS_SUBS layer can be viewed on the Land Ownership Application and is available via monthly data delivery.



FUN FACT

The earliest plat book image we have encountered so far is from 1901 (image above).

NEW LAYERS



HISTORIC STREET NAMES

PAGis has published a new layer called Historic Street Names (HSN). This layer shows which streets have had an official name change. This information was gathered from municipal ordinances, historic subdivision plats, and data submitted by addressing authorities. This layer is available via monthly data delivery.

In Little Rock before 1869, 2nd St was called Cherry Street, 3rd St was called Mulberry Street, and Capitol Ave was called Orange Street.



SOLAR PANELS

PAGis has published a new layer called Solar Panel (SOL). This layer shows the extent and location of rooftop and ground solar installations. The solar panel layer was created using visual identification on ortho-imagery and permit information. This layer is available via bi-annual data deliveries.



There are over 400 individual solar panels on houses in the PAGis service area.

STRUCTURE CODE UPDATES

In November 2023, PAGis updated the domain list for the BPADD structure code field. The structure code domain values are informed by the North American Industry Classification System (NAICS). The update included removing unused codes, updating code names and numbers, and adding helpful codes such as 44511-Supermarkets and Grocery Retailers, 445131-Convenience Retailers, and 92119-Government Support. View the list of Structure Codes in Appendix M of the PAGis Data Dictionary.

PAGIS MEMBER SPOTLIGHT



JOHN PFENENGER

GIS DATABASE COORDINATOR
CENTRAL ARKANSAS WATER

John Pfenenger is the GIS Database Coordinator at Central Arkansas Water. Over the past 18 years, he has worked in a variety of GIS roles at CAW.

How did you get into GIS?

I always liked maps and atlases, but it was my second year in college when I learned about the GIS degree at UAM and began my professional career path.

What do you do at your job?

I administer Central Arkansas Water's ESRI and Cityworks environments.

How do you use PAgis data in your daily work?

PAgis data is vital for almost everything we do. Cityworks (our management system) uses PAgis data for geocoding and our workers wouldn't be able to function as well if not for the great planimetric base data. Our project planning, asset management, and day to day work in ArcGIS is made much easier due to the PAgis data.

Is there a project that you've worked on that made you feel truly accomplished?

I started the project for GPSing every meter box in our system while in a previous role at CAW. It makes me happy to see how many new uses and analytical processes are made possible by the existence of this data.

If you could have any superpower for a day, what would it be and why?

I would choose omniscience. I would spend the day writing down the answers to all the important questions/problems of the world. The formula for a cure for cancer, what happened to the Roanoke Colony, are aliens real, etc.

PAgis CROSSWORD

1. Agencies receive updated data every month via ...
2. This layer shows you where to play soccer
3. View FIRM panel boundaries here
4. This member agency handles a lot of effuse north of the river
5. This layer shows you where to walk

